



# MY25 ARIYA

## Specifications

	ENGAGE 2WD 63 kWh	ADVANCE 2WD 63 kWh	ADVANCE+ 2WD 87kwh	EVOLVE e-4ORCE 87 kWh
Drivetrain				
Motor	100% electric	100% electric	100% electric	100% electric dual motor
Battery	Liquid-cooled and heated	Liquid-cooled and heated	Liquid-cooled and heated	Liquid-cooled and heated
Battery Usable Capacity (kWh)	63	63	87	87
Driven wheels	Front	Front	Front	e-4ORCE 4WD
Fuel Type	Electric	Electric	Electric	Electric
Transmission	Automatic / reduction drive	Automatic / reduction drive	Automatic / reduction drive	Automatic / reduction drive
Drive mode selector with 3 modes (Standard, Eco, Sport)	•	•	•	
Drive mode selector with 4 modes (Standard, Eco, Sport, Snow)				•
e-Pedal Step	•	•	•	•
e-4ORCE electric-drive four-wheel-control technology				•
Performance				
Maximum power (kW) - front motor / rear motor	160 / -	160 / -	178 / -	160 / 160
Maximum torque (Nm) - front motor / rear motor	300 / -	300 / -	300 / -	300 / 300
Maximum power (kW) - combined system	160	160	178	290
Maximum torque (Nm) - combined system	300	300	300	600
Indicative driving range (km; WLTP combined cycle)*	385	385	504	487
Electricity consumption (Wh per km)	184	184	191	208
CO2 Emissions while driving (g/km)	0	0	0	0
Acceleration, 0-100km/h (seconds)	8.0	8.0	8.1	5.6
Top speed (km/h)	160	160	160	200
Charging				
Charging port connector type	CCS type 2	CCS type 2	CCS type 2	CCS type 2
On board charger - maximum capacity 7.4 kW (single phase)	S	S	S	
On board charger - maximum capacity 22 kW (three phase)			O	S
On-board charging cable	6 metre mode 3 32A	6 metre mode 3 32A	6 metre mode 3 32A	6 metre mode 3 32A
Illuminated charging port	•	•	•	•
DC quick charger				
DC 50 kW charging rate (10%-80%, approx. mins)	65	65	90	90
DC 130 kW charging rate (10%-80%, approx. mins)	35	35	40	40
Maximum DC charging power (kW)	130	130	130	130
AC charger				
AC 7.4 kW charging rate (10%-100%, approx. hours)	9	9	12.5	12.5
AC 22 kW charging rate (10%-100%, approx. hours)			4.5	4.5
Brakes				
Front and rear ventilated disc brakes	•	•	•	•
Anti-lock Braking System	•	•	•	•
Electronic Brakeforce Distribution	•	•	•	•
Brake Assist	•	•	•	•
Hill Start Assist	•	•	•	•
Electric parking brake with auto hold function	•	•	•	•

Nissan ARIYA specifications

	ENGAGE 2WD 63 kWh	ADVANCE 2WD 63 kWh	ADVANCE+ 2WD 87kWh	EVOLVE e-4ORCE 87 kWh
Suspension and steering				
Independent front suspension - MacPherson strut	•	•	•	•
Independent rear suspension - multi-link	•	•	•	•
Front and rear stabiliser bars	•	•	•	•
Electronic Power Steering (EPS)	•	•	•	•
Dimensions				
Overall length (mm)	4,595			
Overall width (mm, including mirrors)	2,172			
Overall width (mm, excluding mirrors)	1,850			
Overall height (mm, unladen)	1,660			
Wheelbase (mm)	2,775			
Ground clearance (mm)	182	182	180	180
Track width (mm, front/rear)	1,585	1,585	1,585	1,575
Turning circle (m, wall-to-wall)	12			
Weights & capacities				
Kerb mass (kg)*	1,908	1,921	2,075	2,222
Gross Vehicle Mass (kg)	2,350	2,350	2,505	2,655
Maximum braked towing capacity* (kg)	750			1,500
Maximum unbraked towing capacity* (kg)	750			
Seating capacity	5			
Cargo capacity with second row upright (Litres, to roof)	466			408
Cargo capacity with second row folded (Litres, to roof)	1,350			1,280
Safety and security				
Intelligent Around View® Monitor with Moving Object Detection		•	•	•
ProPILOT+	•	•	•	•
Rear view camera	•	•	•	•
Rear parking sensors	•	•	•	•
Front parking sensors	•	•	•	•
Intelligent Forward Collision Warning	•	•	•	•
Intelligent Emergency Braking with junction assist & pedestrian/cyclist detection	•	•	•	•
Intelligent Rear Automatic Braking	•	•	•	•
Rear Cross Traffic Alert	•	•	•	•
Blind Spot Warning	•	•	•	•
Intelligent Blind Spot Intervention	•	•	•	•
Lane Departure Warning	•	•	•	•
Intelligent Lane Intervention	•	•	•	•
Intelligent Driver Alert	•	•	•	•
Intelligent Cruise Control	•	•	•	•
Traffic Sign Recognition	•	•	•	•
Tyre Pressure Monitoring System	•	•	•	•
Vehicle Dynamic Control (VDC) with Traction Control System (TCS)	•	•	•	•
Tyre repair kit	•	•	•	•
Acoustic Vehicle Alerting System	•	•	•	•
Rear seat (door) alert	•	•	•	•
Seatbelt reminder (front and rear)	•	•	•	•
Rear door child locks	•	•	•	•
Alarm System	•	•	•	•
Airbags				
Front seat airbags (driver & front passenger)	•	•	•	•
Seat side airbags (driver & front passenger)	•	•	•	•
Front row far side airbag (centre)	•	•	•	•
Side curtain airbags (driver & passenger side)	•	•	•	•
Comfort and convenience				
Head-Up Display			•	•
Dual-zone automatic climate control	•	•	•	•
Second row air vents	•	•	•	•
Plasma cluster ion air purifier		•	•	•
Intelligent Key™ with push button engine start	•	•	•	•
Approach unlock & walkaway lock	•	•	•	•
Automatic headlights	•	•	•	•
High Beam Assist	•	•	•	

Nissan ARIYA specifications

	ENGAGE 2WD 63 kWh	ADVANCE 2WD 63 kWh	ADVANCE+ 2WD 87kWh	EVOLVE e-4ORCE 87 kWh
Adaptive Driving Beam headlights				•
Automatic dimming frameless rear view mirror	•	•	•	
Intelligent Rear View Mirror				•
Automatic rain-sensing front wipers	•	•	•	•
Speed-sensitive variable intermittent windshield wipers	•	•	•	•
Power adjustable, power folding, heated door mirrors	•	•	•	
Power adjustable, power folding, heated door mirrors with tilt to reverse				•
Memory system (driver/passenger seat)			•	
Memory system (driver/passenger seat, door mirrors & steering wheel)				•
One touch power windows with remote open/close	•	•	•	•
Motion sensing power tailgate		•	•	•
Heated front windscreen				•
Three blink turn signal	•	•	•	•
Door mirrors with LED turn indicator	•	•	•	•
Rear luggage hooks (x6)	•	•	•	•
Audio and connectivity				
2 x 12.3" TFT display screens	•	•	•	•
Satellite navigation	•	•	•	•
Wireless Apple CarPlay®^ and wired Android Auto™^	•	•	•	•
Wireless smartphone charger^	•	•	•	•
Bluetooth® phone and audio streaming^	•	•	•	•
Voice control	•	•	•	•
6 speaker audio system	•			
Bose® 10 speaker premium audio system²		•	•	•
AM/FM radio and DAB+ digital radio	•	•	•	•
2 front USB ports (data and charge): 1 x type A / 1 x type C)	•	•	•	•
2 rear USB ports (charge only): 1 x type A / 1 x type C)	•	•	•	•
1 front 12V outlet	•	•	•	•
Exterior features				
Body colour door handles	•	•	•	•
Side window surround - satin chrome	•	•	•	
Side window surround - matte chrome				•
Rear roof spoiler	•	•	•	•
Shark fin antenna	•	•	•	•
Body colour roof (with body colour rear spoiler, shark fin antenna)	•	•	•	•
Black painted roof* (with black rear spoiler, shark fin antenna)	◦	◦	◦	◦
Black door mirrors	•	•	•	•
e-4ORCE tailgate badge				•
Exterior – lighting				
LED headlights	•	•	•	•
LED tail lights	•	•	•	•
LED daytime running lights with 'follow me home' functionality	•	•	•	•
LED front fog lights		•	•	•
LED high mounted stop light	•	•	•	•
LED front and rear sequential turn signal			•	•
Exterior - wheel & tyre				
19" alloy wheels with aero cover & 235/55 R19 tyres	•	•	•	
20" alloy wheels with aero cover & 255/45 R20 tyres				•
Exterior - glass				
Privacy glass (second row & rear windows)		•	•	•
Super UV infrared cut glass		•	•	•
Tilt & slide power sunroof with panoramic glass roof			•	•
Interior				
Leather-accented¹ steering wheel	•	•	•	•
Tilt & telescopic steering wheel adjustment	•	•	•	
Power tilt & telescopic steering wheel adjustment				•
Heated steering wheel		•	•	•
Front row seat back pockets	•	•	•	•

Nissan ARIYA specifications

	ENGAGE 2WD 63 kWh	ADVANCE 2WD 63 kWh	ADVANCE+ 2WD 87kWh	EVOLVE e-4ORCE 87 kWh
Front row sun visors with illuminated vanity mirrors	•	•	•	•
Second row folding centre armrest with 2 cup holders	•	•	•	•
Andon illumination (footwell & front doors)	•	•	•	
Andon illumination (footwell, front doors & LED line illumination)				•
Centre console with storage	•	•	•	
Power sliding centre console with storage				•
Cargo area lighting	•	•	•	•
Divide-N-Hide® configurable cargo system	•	•	•	•
Front door kick plates with e-4ORCE emblem				•
Seating				
6-way manually adjustable driver / front passenger seat	•			
6-way power adjustable driver / front passenger seat		•		
2-way power lumbar driver seat		•		
8-way power adjustable driver / front passenger seat			•	•
4-way power lumbar driver seat			•	•
Heated front seats		•	•	•
Heated second row outboard seats			•	•
Cooled (ventilated) front seats			•	•
60/40 split fold second row seat	•	•	•	•
Child restraint anchorage (ISOFIX second row, outboard seats/tether second row, all seats)	•	•	•	•
Trim				
Seat trim - Black cloth	•			
Seat trim - Black cloth with synthetic leather accents		•		
Seat trim - Black synthetic leather with Ultrasuede® inserts			•	
Seat trim - Blue Nappa leather*				•
Blue suede dashboard, door trim and front armrest				•

Exterior paint				
Aurora Green	•	•	•	•
White Pearl	■	■		
Ceramic Grey	■	■		
Pearl Black	■	■	■	■
Gun Metallic	■	■	■	■
White Pearl with black painted roof	■	■	■	■
Blue Pearl with black painted roof			■	■
Ceramic Grey with black painted roof			■	■
Akatsuki Copper with black painted roof			■	■

Ownership				
Up to 10 year / 300,000 kilometre service activated warranty** otherwise; 5 year unlimited kilometre warranty**	•	•	•	•
Up to 10 year / 300,000 kilometre service activated roadside assist <sup>3</sup> otherwise; 1 year unlimited kilometre roadside assist <sup>3</sup>	•	•	•	•
5 Year Flat Price Service Schedule <sup>m</sup>	•	•	•	•

•

Standard

Not available

◦

Option

■

Premium Paint

The Nissan ARIYA is not yet available for purchase. Expected availability for Australia second half of 2025. All images and features are based on the overseas model. Actual Australian production model may vary. Images shown are indicative only.

\*\* Up to 10 years or 300,000km (whichever occurs first), when servicing at authorised Nissan dealers. Where vehicle is not serviced through Nissan or ceases to be serviced at Nissan, additional years will not be added so 10 year/300,000km warranty (whichever occurs first) may not apply. Warranty protection will remain 5 year/unlimited km warranty, plus any additional service activated years previously added. Conditions apply. Lithium-Ion battery pack warranted against battery capacity loss below 9 bars out of 12 (as shown in vehicle capacity gauge), for a period of 8 years or 160,000 kilometres, whichever occurs first. Full terms at Nissan.com.au/warranty.

<sup>3</sup> When servicing at authorised Nissan dealers. Where vehicle is not serviced through Nissan or ceases to be serviced at Nissan, additional years will not be added, so 10 year/300,000km roadside assist (whichever occurs first) may not apply. Roadside assist duration will remain as 1 year/unlimited kilometre roadside assist, plus any service activated years previously added. Conditions apply. Full terms at Nissan.com.au/roadsideassistance.

<sup>m</sup> Ask your Nissan Dealer to explain exactly what items are covered in each Scheduled Service. Applies for the first 5 services or 5 years, whichever occurs first. Some exclusions apply. Ask your Nissan Dealer or view full terms at Nissan.com.au/service.

Nissan ARIYA specifications

Choose your exterior paint colour



Pearl Black<sup>#</sup>



Aurora Green



Gun Metallic<sup>#</sup>



Ceramic Grey<sup>#</sup>



White Pearl<sup>†</sup>



White Pearl with Black Roof<sup>#-</sup>



Blue Pearl with Black Roof<sup>#-</sup>



Ceramic Grey with Black Roof<sup>#-</sup>



Akatsuki Copper with Black Roof<sup>#-</sup>

Wheel and tyre options



19" alloy wheel with aero cover  
Standard on:  
ENGAGE, ADVANCE, ADVANCE+



20" alloy wheel with aero cover  
Standard on:  
EVOLVE

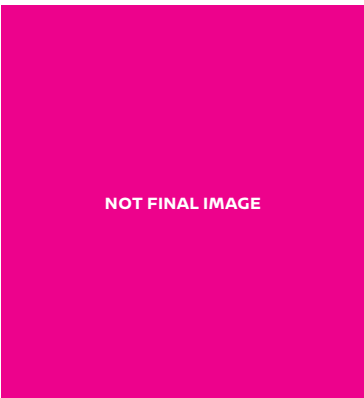
Choose your interior trim



Black cloth.  
Standard on ENGAGE.



Black cloth with synthetic leather accents.  
Standard on ADVANCE.



Black synthetic leather with Ultrasuede<sup>®</sup> inserts.  
Standard on ADVANCE+



Blue Nappa Leather<sup>\*</sup>.  
Standard on EVOLVE.

## Nissan ARIYA specifications

The Nissan ARIYA is not yet available for purchase. Expected availability for Australia second half of 2025. All images and features are based on the overseas model. Actual Australian production model may vary. Images shown are indicative only.

<sup>o</sup> Indicative driving range using the Worldwide Harmonised Light Vehicle Test Procedure (WLTP). Figures obtained after the battery was fully charged. Figures stated for the purposes of comparison amongst vehicles tested to the same technical procedures only. Actual real world driving range may vary depending on factors such as battery age and condition, driving style, use of heating/cooling, traffic conditions, weather conditions, any accessories fitted and vehicle load.

<sup>†</sup> Kerb mass is the unladen mass of the vehicle without any accessories fitted.

Gross Vehicle Mass is the maximum loaded mass of a vehicle.

<sup>‡</sup> Towing capacity is subject to towbar/towball capacity and is based on the fitment of a Genuine Nissan towbar. Towing capacity figure described is a maximum figure. Actual towing capacity depends on the laden mass of the vehicle, driving conditions, fitment of any accessories or towing equipment limitations including the maximum towball download.

<sup>\*</sup> ProPILOT cannot prevent collisions. It is the driver's responsibility to be in control of the vehicle at all times. Always monitor traffic conditions and keep both hands on the steering wheel. System operates only when lane markings are detected. Does not function in all weather, traffic and road conditions. System has limited control capability and the driver may need to steer, brake or accelerate at any time to maintain safety. See Owner's Manual for safety information.

<sup>\*</sup> CarPlay is a registered trademark of Apple Inc. Android Auto is a trademark of Google LLC. Compatible device required. Wired connections require a USB connection.

<sup>o</sup> Compatible device required.

<sup>o</sup> The Bluetooth™ word mark is owned by The Bluetooth SIG, Inc. Functionality and compatibility will vary depending on the device.

<sup>o</sup> Bose is a registered trade mark of Bose Corporation.

<sup>o</sup> Premium paint available at extra cost. In some cases, the printed colours may vary from the actual paint colours.

<sup>o</sup> Black painted roof available at additional cost.

<sup>\*</sup> Leather-accented features and upholstery may contain synthetic material. Minor trim variations may occur from time to time.



FINANCIAL  
SERVICES

For more information please visit [nissan.com.au/owners](https://nissan.com.au/owners), ask your Nissan Dealer or phone 1800 035 035 during normal AEST business hours.

All illustrations, information and specifications presented and referred to in this brochure were correct at the time this brochure was approved for printing. The colours in the photographs may vary from actual colours. Nissan Motor Co (Australia) Pty. Ltd. reserves the right, subject to the laws of Australia and/or the regulations of any competent authority which may apply from time to time, at its discretion at any time and without prior notice, to discontinue or change the models, features, specifications, designs and prices of the products referred to in this brochure and any optional equipment therefore without incurring any liability whatsoever to any purchaser or prospective purchaser of any such products. Some of the items referred to herein are optional at extra cost. Some options may be required in combination with other options. Always consult your Nissan Dealer for the latest information on models, specifications, features, prices, options and availability. Nissan Motor Co (Australia) Pty. Ltd. ACN 004 663 156. Updated June 2025.



NissanAustralia



@nissanaustralia



NissanAustralia